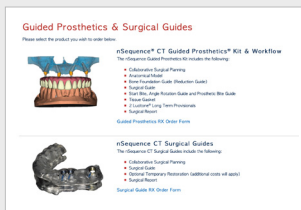


nSequence® Guided Prosthetics®

REQUIRED RECORDS FOR A FULLY EDENTULOUS ARCH



Complete and accurate records will lead to a more accurate result.

Submit an Online Rx Form to:

nsequence.com/ct-guided-prosthetics-order

Please submit the following records to nSequence:

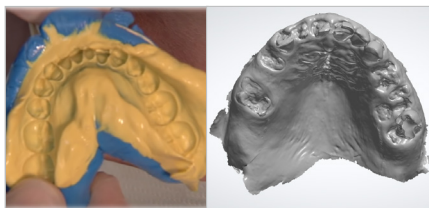
1

CBCT Scan DUAL SCAN
Protocol, single or multi-file
with .dcm extension



2

Full Arch Surface Data:
Impression or IOS
in .stl format



3

Bite Registration in
hinge position



4

Photos
with .jpg, .png, .bmp
file extensions



For detailed information, please visit nsequence.com/virtual-learning-academy »

Topic #2: Best Practices for Record Taking for Full Arch Rehabilitation or contact us at 888.809.2777.

Submit an Online Rx Form

1. Go to nsequence.com
2. Click on Send a Case.
3. Click on Guided Prosthetics & Surgical Guides.
4. Select Guided Prosthetics Rx Order Form.

IMPORTANT TO NOTE

Complete and correct clinical records are essential to delivering both accurate implant placement and precise prosthetic results on the day of surgery. **Incomplete records will delay the completion of your case.** Thank you for helping us serve your patients effectively, by providing accurate records.

Once all records are received and validated, an online case review can be scheduled.

1

CBCT Scan



1. If the patient has a denture, reline with impression material and place six radiographic markers on the pink cameo area (three on lingual, three on buccal).
2. If the patient does not have a denture, create a bite rim, reline with impression material and place six radiographic markers (three on lingual, three on buccal).
3. Scan the denture by itself, placing it on the plate in your CBCT scanner.*
4. Scan the patient wearing the denture with a closed bite.
5. Set the scanner at .3 Voxels at 20 seconds (see CBCT guidelines for settings and calibration).
6. Scan must capture entire arch(es) to be restored.
7. Verify scan quality before dismissing patient.

**Must separate the denture from the metal plate at least 0.5" with radiolucent material. May need to re-aim scanner to accommodate the denture position.*

2

Surface Data



1. Capture the full arch PVS or intraoral scan of both arches, with the dentures removed, including all borders necessary for a complete denture.

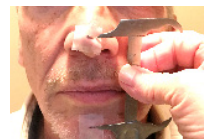


3

Anatomic Jaw Relationship (not a habitual bite)



1. Determine the correct VDO.
2. One suggested option is that you ask the patient to touch the roof of their mouth as far posterior as possible, with the tip of the tongue.
3. Then, ask the patient to close together until the correct VDO is achieved. Practice 2-3 times.
4. Apply bite material and ask the patient to repeat the practiced bite.



4

Photos (Six Images Wearing Prosthetic)



Capture photos of:

1. The smile with the highest possible lip position.
2. The frontal view with lips at rest.
3. The profile view with lips at rest.
4. **The retracted** left and right lateral views.
5. **The retracted** frontal view.

For detailed information, please visit nsequence.com/virtual-learning-academy » **Topic #2: Best Practices for Record Taking for Full Arch Rehabilitation** or contact us at **888.809.2777**.