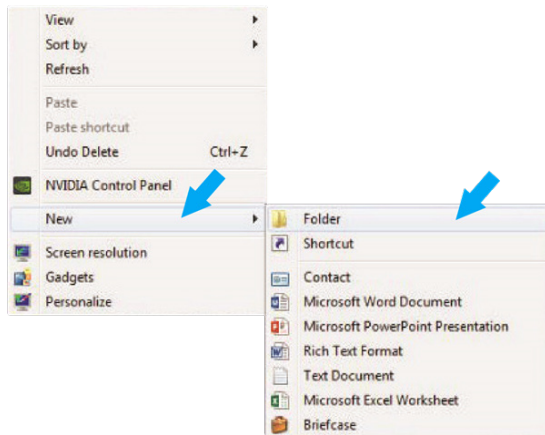


Exporting from CARESTREAM

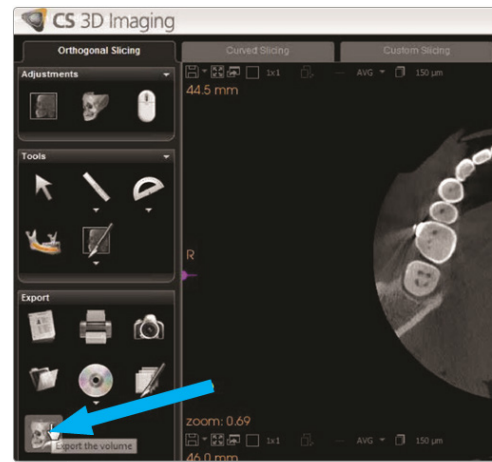
STEP 1.

Right click on your desktop and select **NEW**. Then, click on **FOLDER**. Rename the folder to match the patient's name.



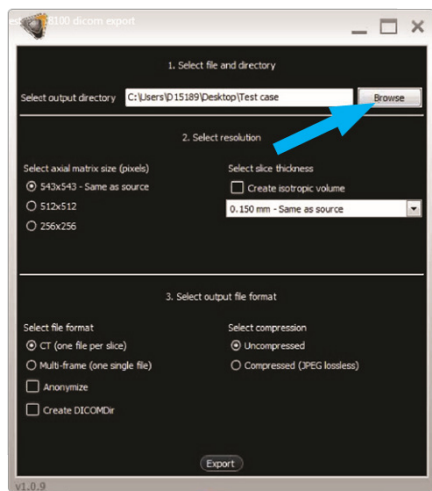
STEP 2.

Open the scan image, and select the **EXPORT THE VOLUME** icon located on the left side of the screen.



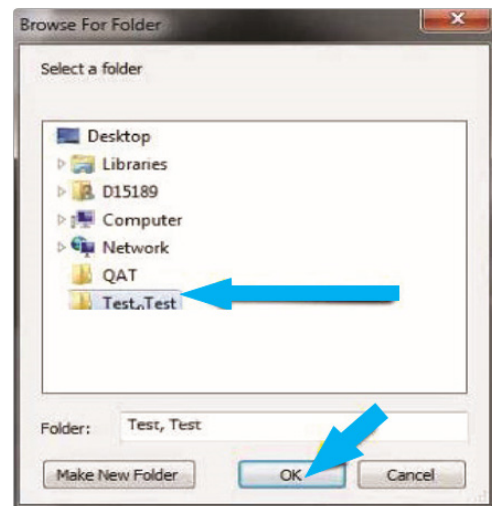
STEP 3.

In the pop-up window, there are three different sections. Click **BROWSE** in the first section to select the export location.



STEP 4.

On the next screen, select the folder you just created on the desktop in Step 1 and select **OK**.



Exporting from CARESTREAM

STEP 5.

Section 2: Select resolution

- Select **“SAME AS SOURCE”** and **“ISOTROPIC.”**

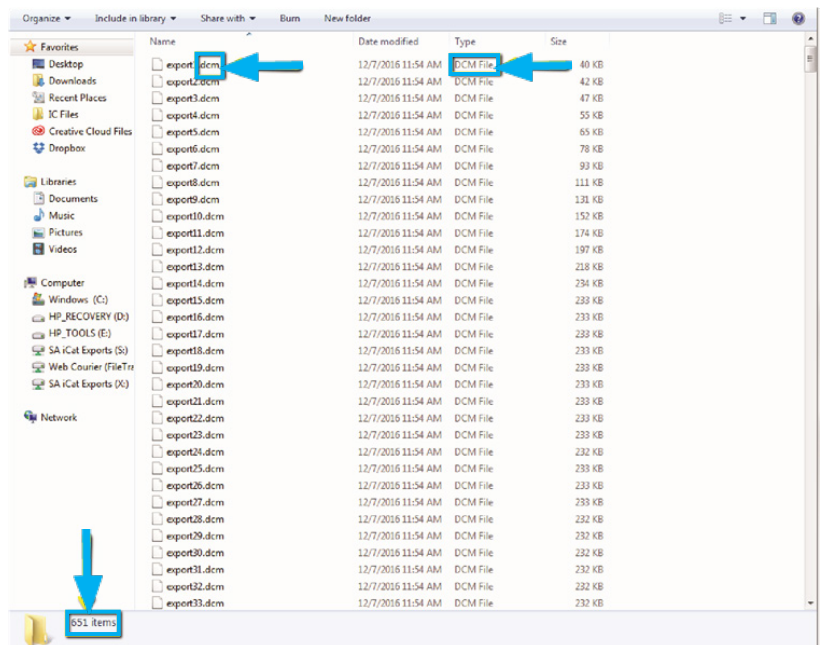
Section 3: Select output file format

- Select **“CT (ONE FILE PER SLICE).”**
- Leave the “Anonymize” and “Create DICOMDir” boxes unchecked.
- For “Select compression,” select **“UNCOMPRESSED.”**
- Click **“EXPORT.”**



STEP 6.

- After the DICOM file exports and saves, open the folder you created on your desktop in Step 1 in order to verify that the DICOM files were all exported.
- There should be several hundred files since these represent the slices of the CBCT scan.
- Ensure that there are no files with any extension other than “.dcm”. If other files are present, delete them.

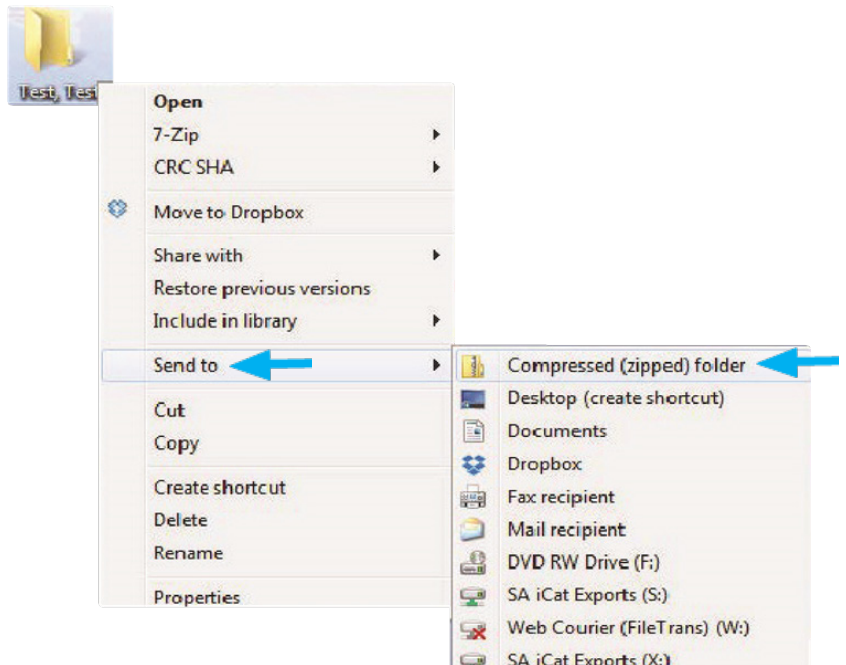


Exporting from CARESTREAM

STEP 7.

Right click on the patient folder you created on the desktop, and select **SEND TO** and **COMPRESSED (ZIPPED) FOLDER**. A duplicate folder will be made with either a zipper or a blue “z.”

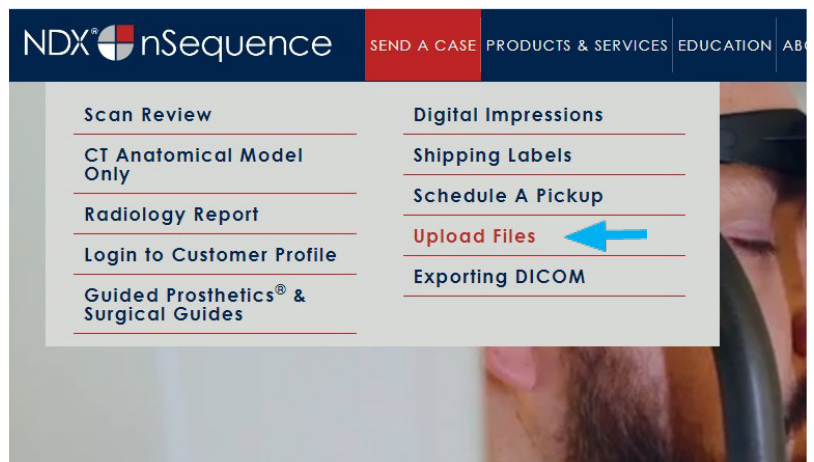
NOTE: If following a Dual Scan Protocol, zip scans individually and label accordingly (i.e., “Patient Scan” and “Denture Scan”).



STEP 8.

You are now ready to upload your file to nsequence.com.

- Hover over **SEND A CASE** in the menu.
- Select **UPLOAD FILES**.



Exporting from CARESTREAM

STEP 9.

Select **CLICK TO ADD FILES** or Drag & Drop the file into the boxed area.

[Send a Case > Upload Files](#)

Prepare your data for upload


Prior to sending us your case, please prepare your data for upload. For enhanced security, we have limited the file formats that we accept.

Please use the following guidelines to ensure prompt receipt of your files.

1. Maximum total file size = 2GB
 2. Maximum of 10 files can be uploaded at a time and upload time is dependent on your internet upload speed.
 3. If sending large volumes of data, please ZIP all files prior to sending.
 4. Supported file extensions:
ZIP, TXT, JSON, XML, 3ML, STL, STP, DCM, PLY, OBJ, DXF, JPG, JPEG, GIF, PNG, TIFF, SVG, WEBP, ICO, DICOM, UDX, PDF, PTS, HTM, HTML, INVVU, WUDAT, BMP, SERIE, DAT
- *Uploading unsupported file types, even when included in a ZIP file, will result in a failed upload attempt.**
5. Be sure to keep the page open until all files have been uploaded.
- *Closing the page before the upload is completed will result in a failed upload attempt.**

We do everything we can to make sure you can upload your files as quickly as possible. If you're experiencing a slow upload time, it may be due to exceptionally large files as well as your Internet Service Provider (ISP) or network connection. Upload progress will not be shown during upload if you are using the Microsoft Edge browser.

Select Files To Upload

Drag & Drop or **Click to Add Files** 

STEP 10.

Complete the form and click **UPLOAD FILES**. The upload process may take a few minutes.

Email address*

Phone number*

Doctor's First Name*

Doctor's Last Name*

Patient's First Name*

Patient's Last Name*


Case Submission - CBCT Scan, STL files and/or Photos

Check Quality of CBCT Scan Only

Post Op Scan Reason for Evaluation:

Quick Case Review

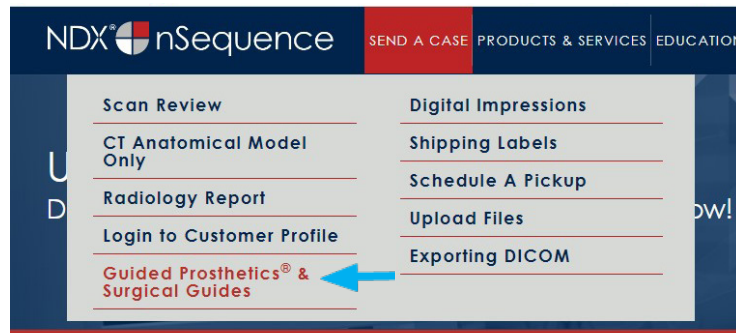
Other Notes:

Upload Files 

Exporting from CARESTREAM

STEP 11.

Go back to the menu, hover over **SEND A CASE** and select **GUIDED PROSTHETICS[®] & SURGICAL GUIDES**.



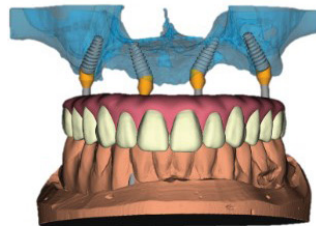
STEP 12.

Choose the applicable Rx order form.

Send a Case > Guided Prosthetics & Surgical Guides

Guided Prosthetics & Surgical Guides

Please select the product you wish to order below.



nSequence[®] CT Guided Prosthetics[®] Kit & Workflow

The nSequence Guided Prosthetics Kit includes the following:

- Collaborative Surgical Planning
- Anatomical Model
- Bone Foundation Guide (Reduction Guide)
- Surgical Guide
- Start Bite, Angle Rotation/Bone Cut Verification Guide
- Tissue Gasket
- 2 Lucitone[®] Long Term Provisionals
- Surgical Report

[Guided Prosthetics RX Order Form](#) ←



nSequence CT Surgical Guides

The nSequence CT Surgical Guides include the following:

- Collaborative Surgical Planning
- Surgical Guide
- Optional Temporary Restoration (additional costs will apply)
- Surgical Report

[Surgical Guide RX Order Form](#) ←

STEP 13.

Complete the Rx order form and click **SUBMIT**.

SUBMIT ←