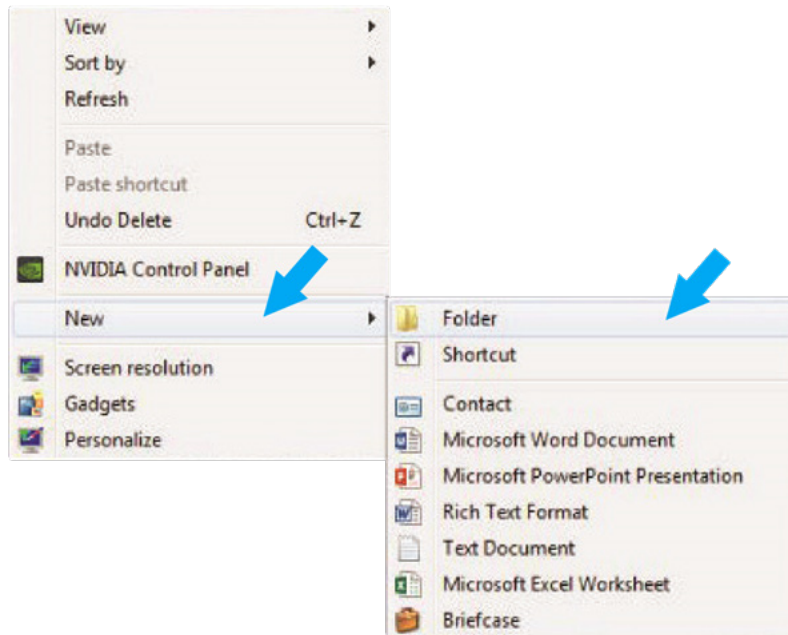
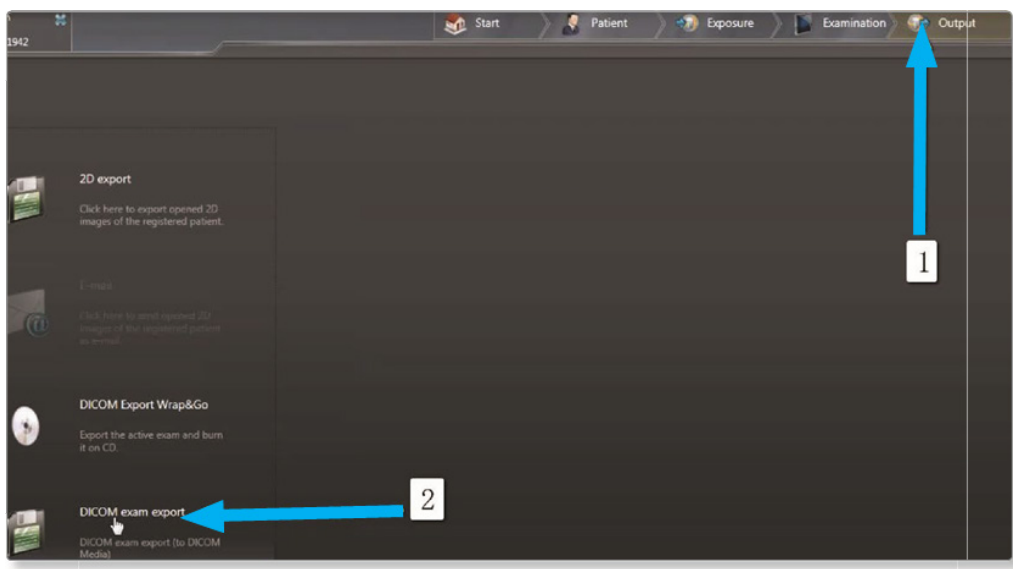


## Exporting from Sidexis 4

**STEP 1.** Right click on your desktop, select **NEW** and click on **FOLDER**. Rename the folder to match the patient's name.

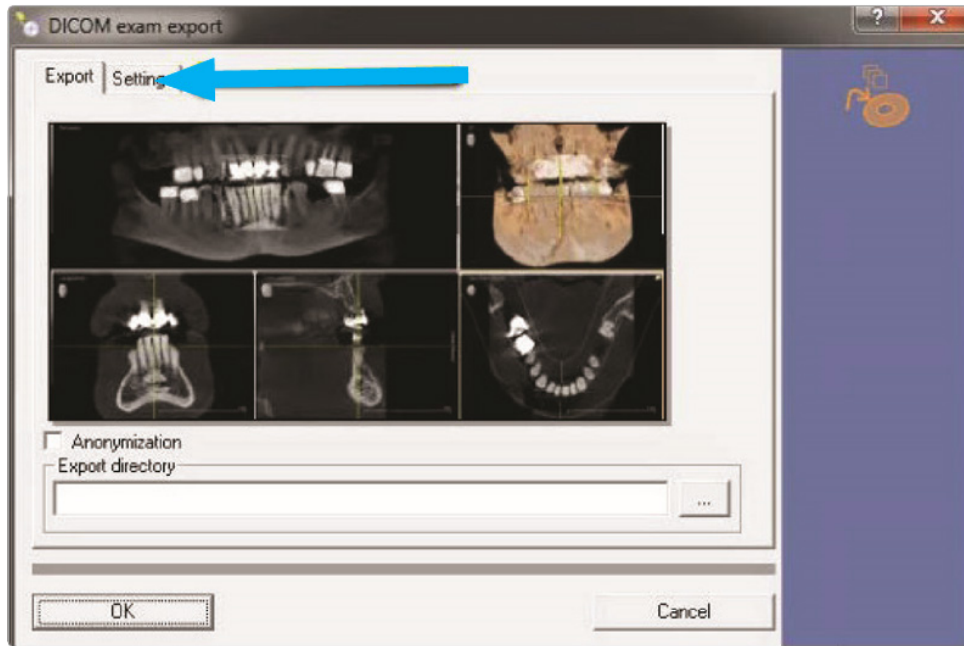


**STEP 2.** Next, go to the patient scan and click on **OUTPUT**. Then, click on **DICOM EXAM REPORT**.

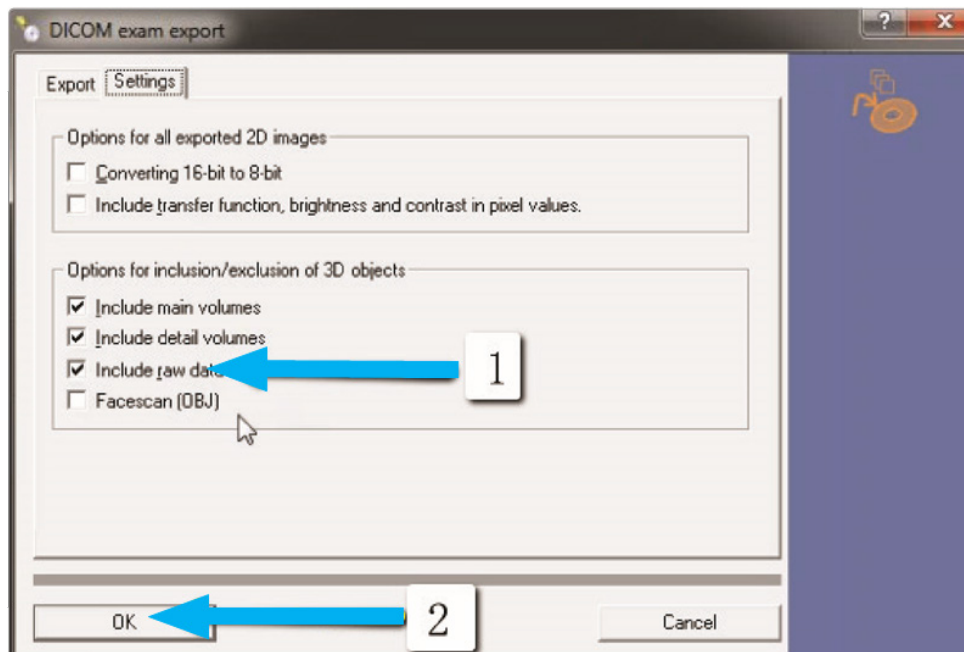


## Exporting from Sidexis 4

**STEP 3.** Click on **SETTINGS** when the next screen appears.

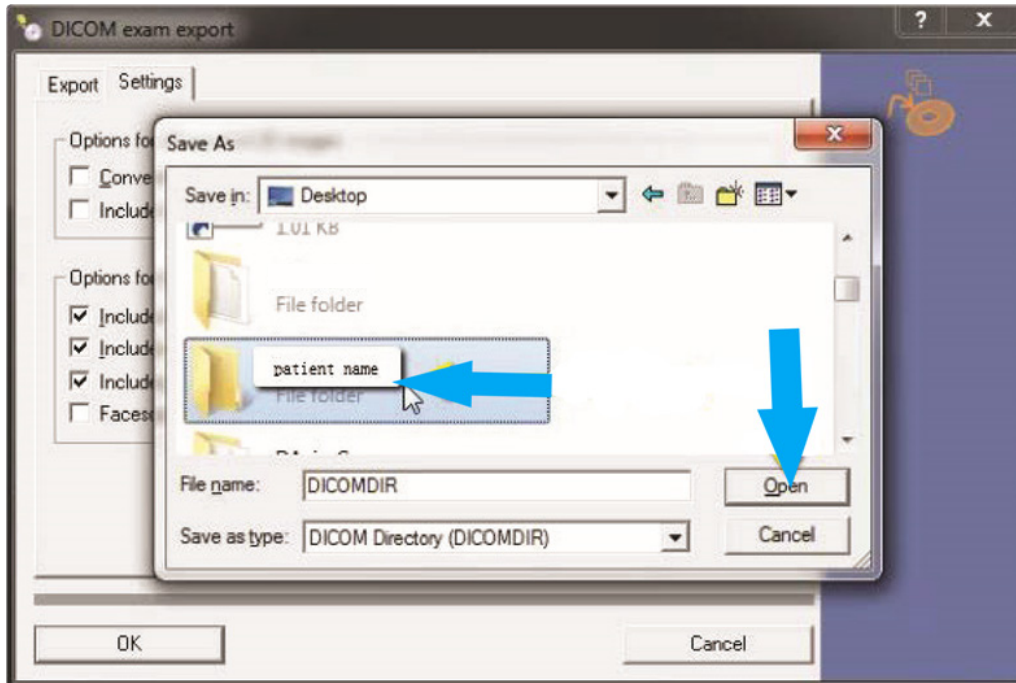


**STEP 4.** Once the **INCLUDE RAW IMAGE DATA** is selected, no other options should have to change. Click **OK** to continue.

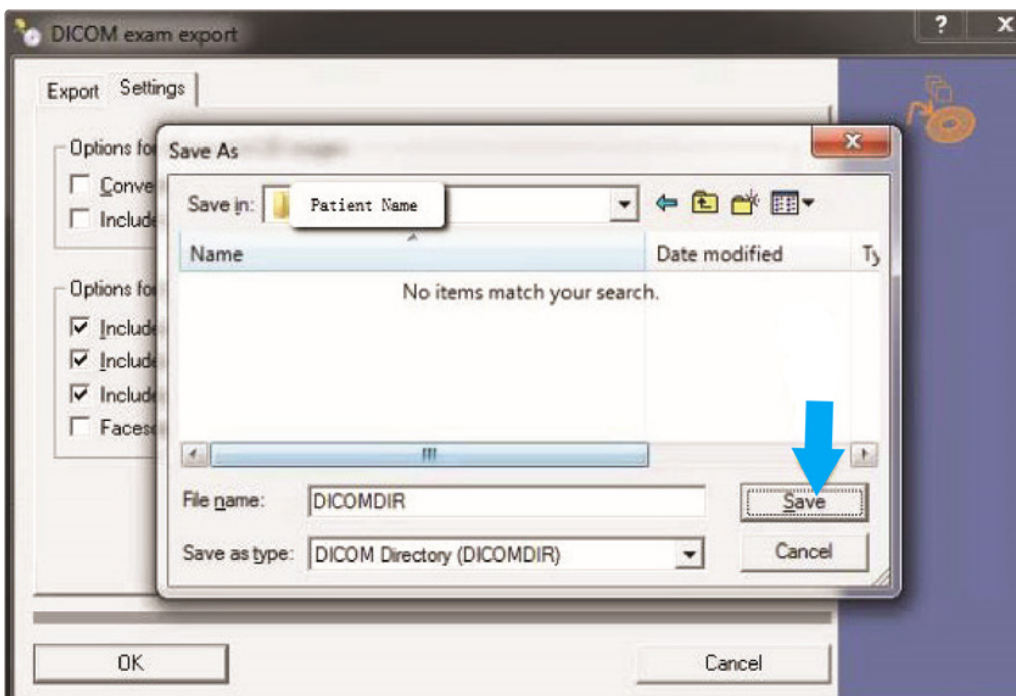


## Exporting from Sidexis 4

**STEP 5.** Select the folder you created on the desktop in Step 1 and click **OPEN**.



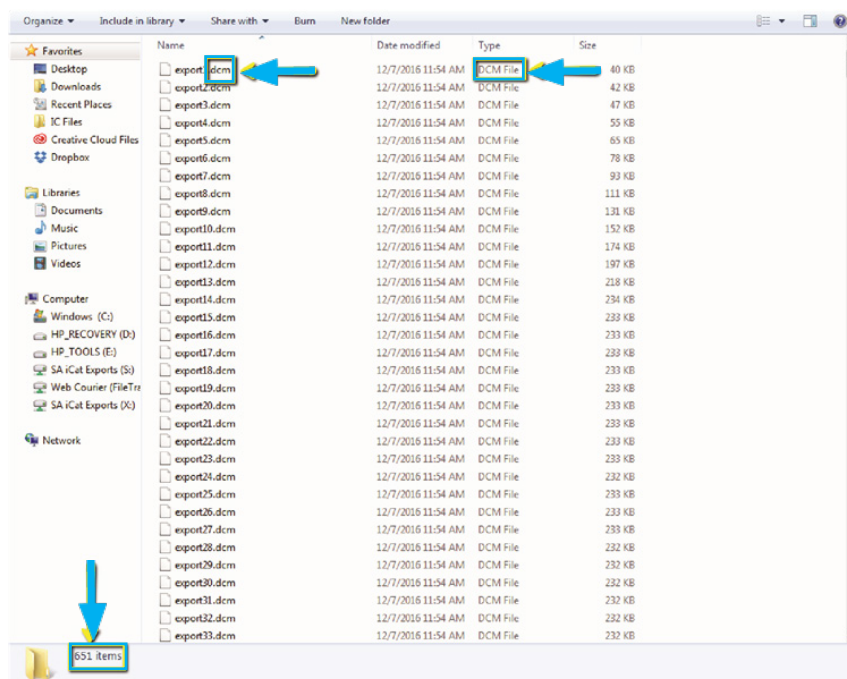
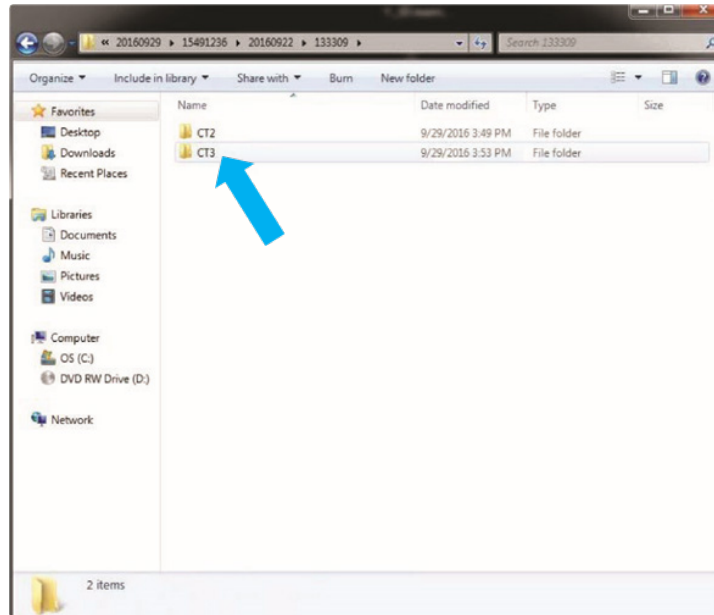
**STEP 6.** Click **SAVE** on the next screen.



## Exporting from Sidexis 4

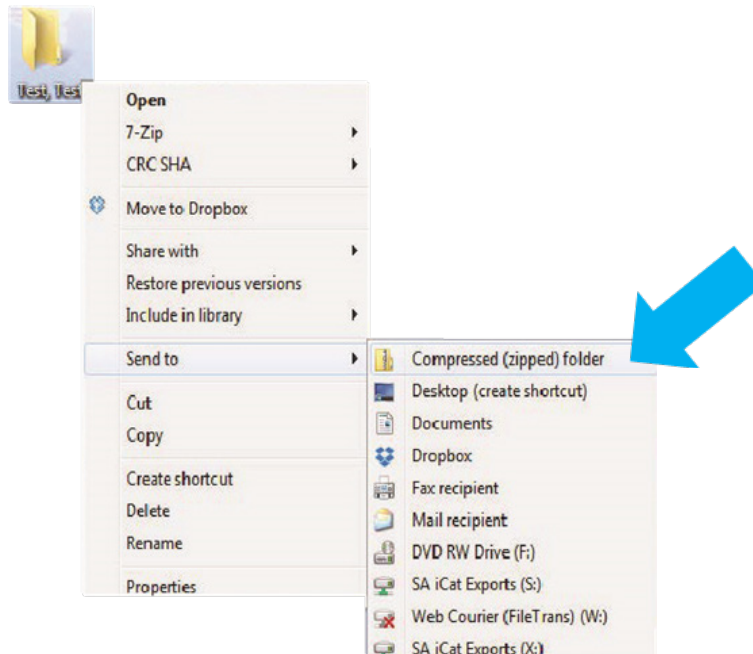
**STEP 7.** Your files will begin exporting.

**STEP 8.** After the DICOM exports and saves, go to the patient's folder and look for the subfolder name "CT3". Verify that the .dcm files were exported correctly (you should see 150 to 450 slices).

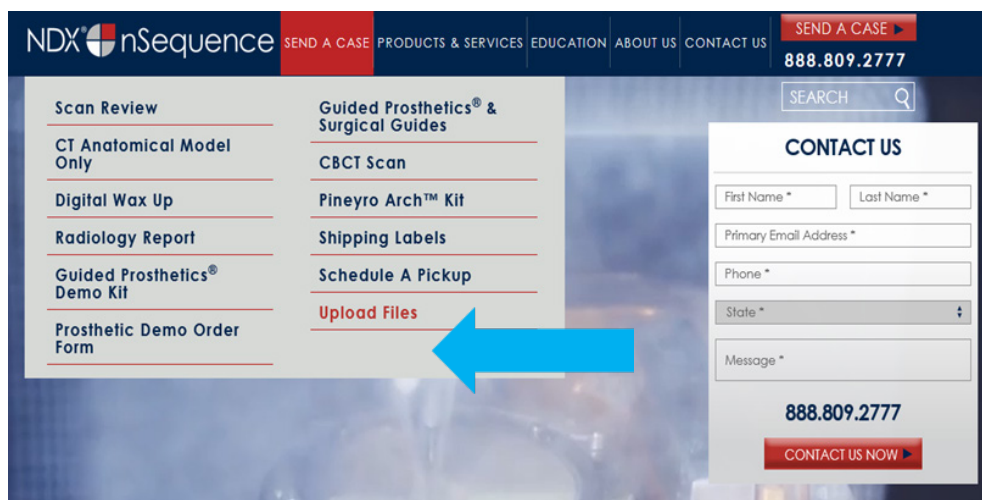


## Exporting from Sidexis 4

**STEP 9.** Right click on the patient folder you created on the desktop, select **SEND TO** and **COMPRESSED (ZIPPED) FOLDER**. A duplicate folder will be made with either a zipper or a blue “z.”



**STEP 10.** You are now ready to upload your file to <https://nsequence.com>. Hover over **SEND A CASE** in the menu. Select **UPLOAD FILES**.



## Exporting from Sidexis 4

**STEP 11.** Select **CLICK TO ADD FILES** or Drag and Drop the file in the boxed area.

### Prepare Your Data For Upload

Prior to sending us your data, please prepare your data for upload. We can accept anything you would like to send us including photos, DICOM data and other file types related to the cases you're submitting.

1. Maximum total file size = 2GB.
2. If sending large volumes of data, please zip all files prior to sending.
3. Maximum 10 files can be uploaded at a time and upload time is dependent on your internet upload speed.
4. Make sure you keep the page open until all files have been uploaded, closing the page will result in failed upload attempt.
5. Upload progress will not be shown during upload if you are using Microsoft Edge browser.

*We do everything we can to make sure you can upload your files as quickly as possible. If you're experiencing a slow upload time, it may be due to exceptionally large files as well as your Internet Service Provider (ISP) or network connection.*

### Select Files To Upload

Drag & Drop or **Click to Add Files** ←

**STEP 12.** Complete the form and click **UPLOAD FILES**. The upload process may take a few minutes.

**Email address\***

**Doctor's First Name\***

**Doctor's Last Name\***

**Patient's First Name\***

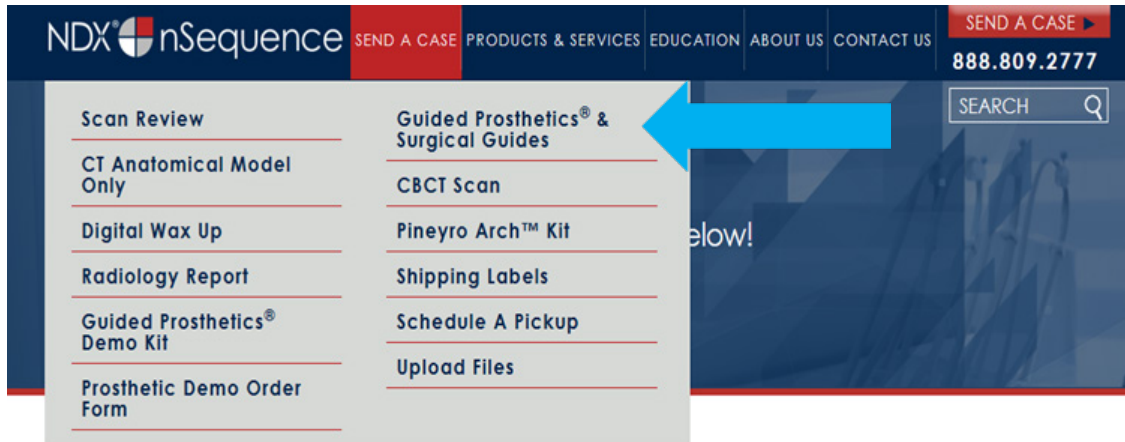
**Patient's Last Name\***

**Notes**

**Upload Files** ←

## Exporting from Sidexis 4

**STEP 13.** Go back to the menu, hover over **SEND A CASE** and select **Guided Prosthetics<sup>®</sup> & Surgical Guides**.

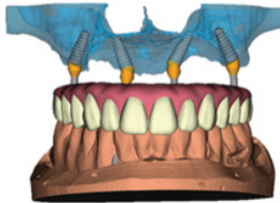


**STEP 14.** Choose the applicable RX order form.

[Send a Case](#) > [Guided Prosthetics & Surgical Guides](#)

### Guided Prosthetics & Surgical Guides

Please select the product you wish to order below.



#### nSequence<sup>®</sup> CT Guided Prosthetics<sup>®</sup> Kit & Workflow

The nSequence Guided Prosthetics Kit includes the following:

- Collaborative Surgical Planning
- Anatomical Model
- Bone Foundation Guide (Reduction Guide)
- Surgical Guide
- Start Bite, Angle Rotation Guide and Prosthetic Bite Guide
- Tissue Gasket
- 2 Long-Term Provisionals
- Surgical Report

[Guided Prosthetics RX Order Form](#)



#### nSequence CT Surgical Guides

The nSequence CT Surgical Guides include the following:

- Collaborative Surgical Planning
- Surgical Guide
- Optional Temporary Restorations (if applicable)
- Surgical Report

[Surgical Guide RX Order Form](#)

**STEP 15.** Finally, complete the RX order form and click **SUBMIT**.