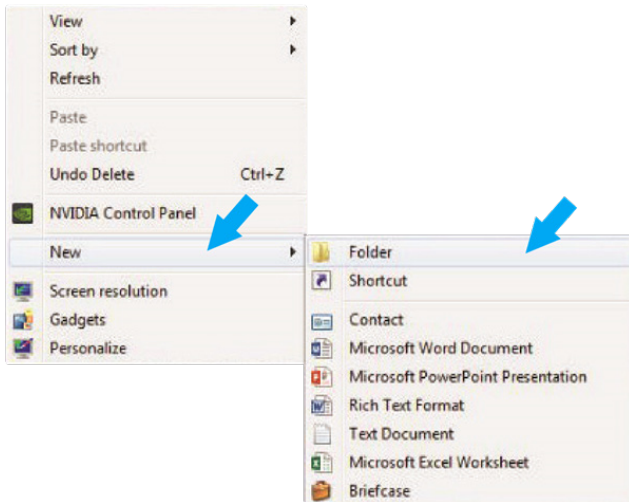
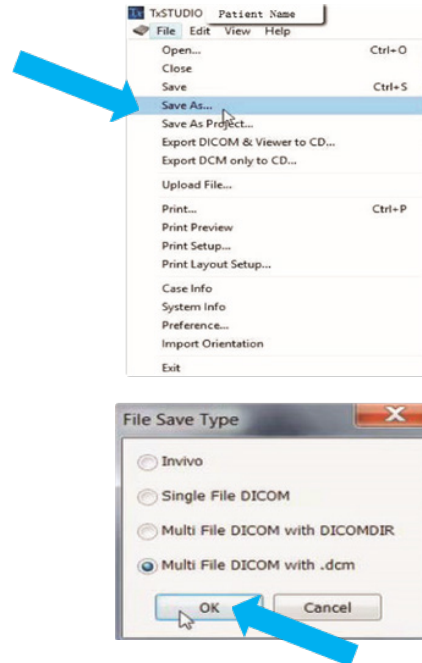


## Exporting from Kavvo/TxSTUDIO/Invivo5

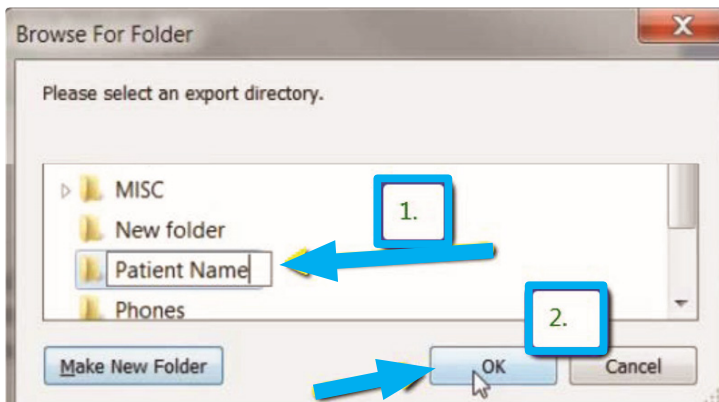
**STEP 1.** Right click on your desktop, select **NEW** and click on **FOLDER**. Rename the folder to match the patient's name.



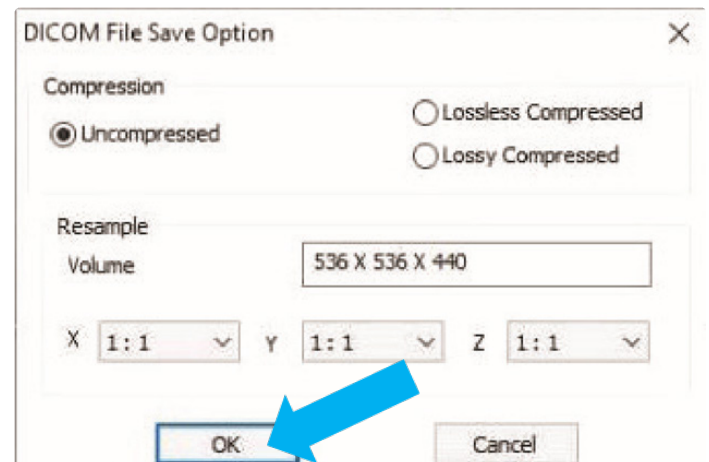
**STEP 2.** Open your image, and click on **FILE, SAVE AS, MULTI FILE DICOM with .dcm**. Click **OK**.



**STEP 3.** Select the folder you created on your desktop in Step 1 and click **OK**.

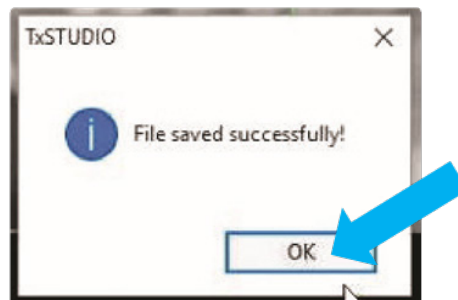
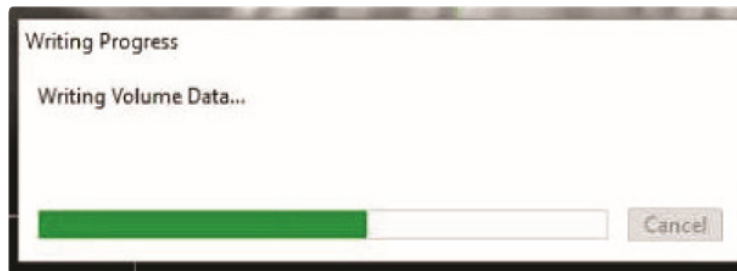


**STEP 4.** Make sure that **UNCOMPRESSED** is selected and click **OK**.

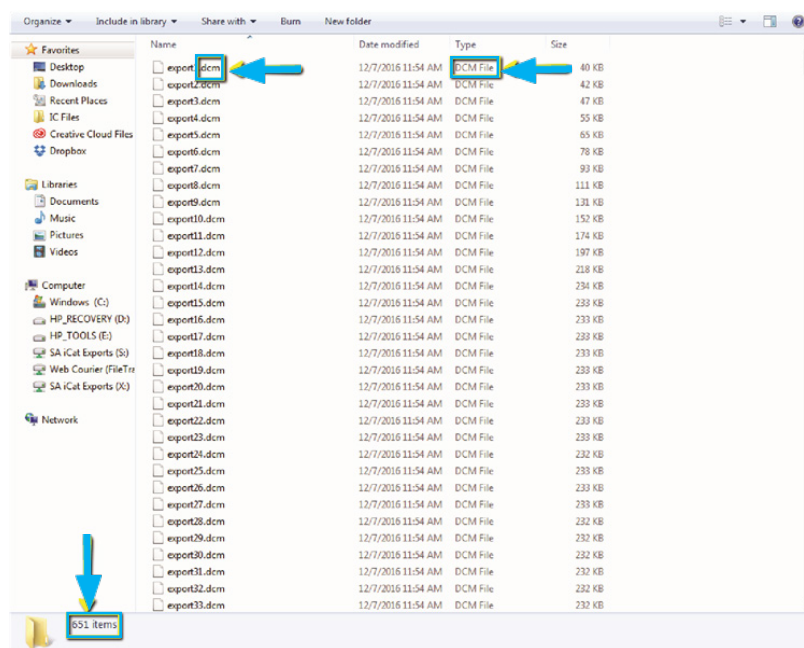


## Exporting from Kavvo/TxSTUDIO/Invivo5

**STEP 5.** The files will begin exporting. Click **OK** when finished.

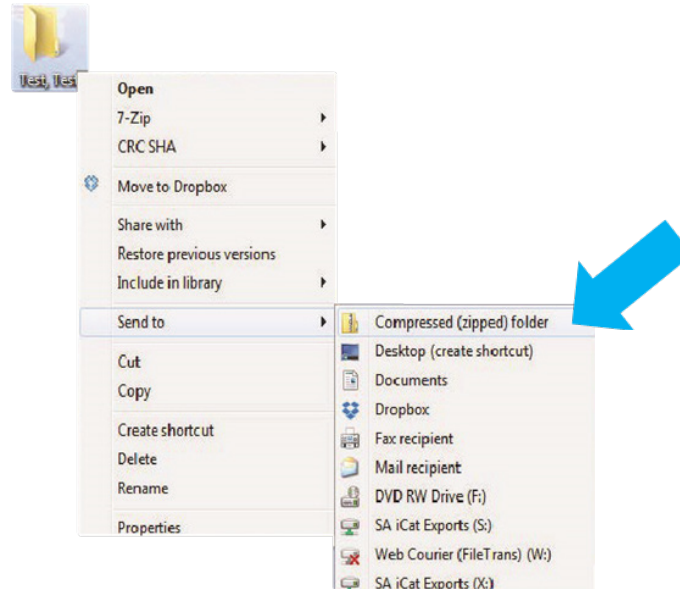


**STEP 6.** After the DICOM exports and saves, go to the patient's folder and verify that the .dcm files were exported correctly (you should see 150 to 450 slices).

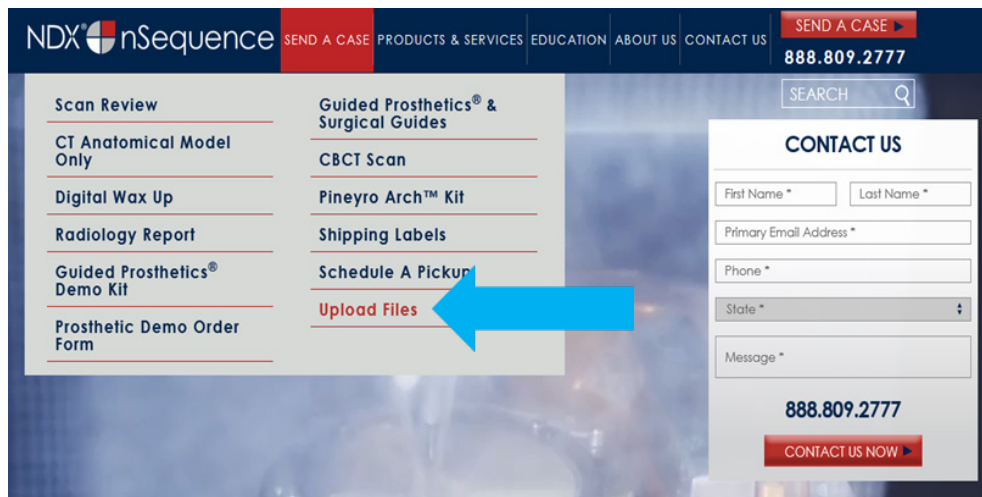


## Exporting from Kavo/TxSTUDIO/Invivo5

**STEP 7.** Right click on the patient folder you created on the desktop, select **SEND TO** and **COMPRESSED (ZIPPED) FOLDER**. A duplicate folder will be made with either a zipper or a blue “z.”



**STEP 8.** You are now ready to upload your file to <https://nsequence.com>. Hover over **SEND A CASE** in the menu. Select **UPLOAD FILES**.



## Exporting from Kavov/TxSTUDIO/Invivo5

**STEP 9.** Select **CLICK TO ADD FILES** or Drag and Drop the file in the boxed area.

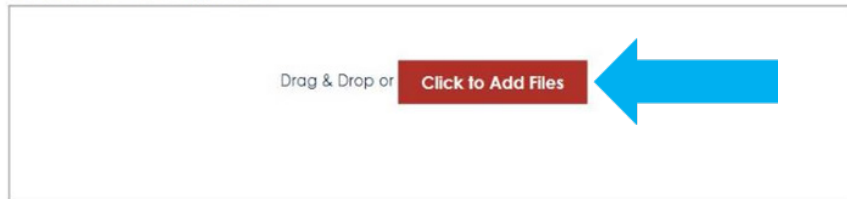
### Prepare Your Data For Upload

Prior to sending us your data, please prepare your data for upload. We can accept anything you would like to send us including photos, DICOM data and other file types related to the cases you're submitting.

1. Maximum total file size = 2GB.
2. If sending large volumes of data, please zip all files prior to sending.
3. Maximum 10 files can be uploaded at a time and upload time is dependent on your Internet upload speed.
4. Make sure you keep the page open until all files have been uploaded, closing the page will result in failed upload attempt.
5. Upload progress will not be shown during upload if you are using Microsoft Edge browser.

*We do everything we can to make sure you can upload your files as quickly as possible. If you're experiencing a slow upload time, it may be due to exceptionally large files as well as your Internet Service Provider (ISP) or network connection.*

### Select Files To Upload



**STEP 10.** Complete the form and click **UPLOAD FILES**. The upload process may take a few minutes.

**Email address\***

**Doctor's First Name\***

**Doctor's Last Name\***

**Patient's First Name\***

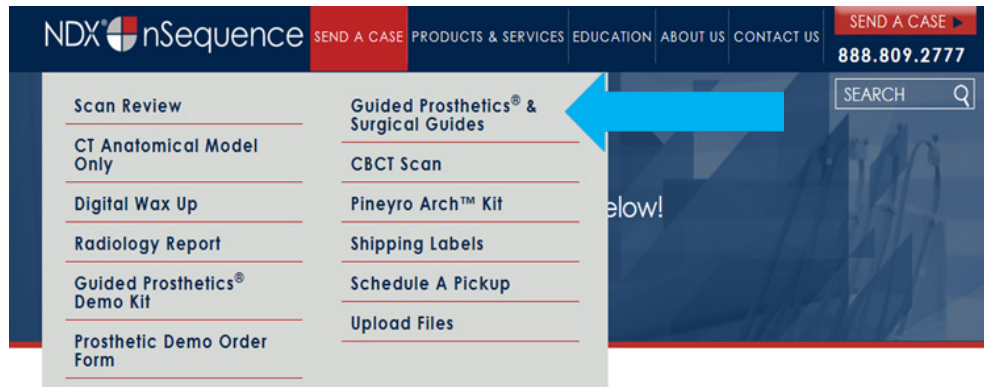
**Patient's Last Name\***

**Notes**

**Upload Files** ←

## Exporting from Kavo/TxSTUDIO/Invivo5

**STEP 11.** Go back to the menu, hover over **SEND A CASE** and select **Guided Prosthetics<sup>®</sup> & Surgical Guides**.

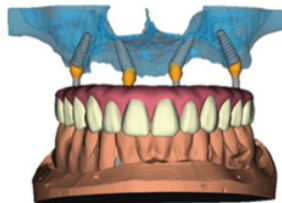


**STEP 12.** Choose the applicable RX order form.

[Send a Case > Guided Prosthetics & Surgical Guides](#)

### Guided Prosthetics & Surgical Guides

Please select the product you wish to order below.



#### nSequence<sup>®</sup> CT Guided Prosthetics<sup>®</sup> Kit & Workflow

The nSequence Guided Prosthetics Kit includes the following:

- Collaborative Surgical Planning
- Anatomical Model
- Bone Foundation Guide (Reduction Guide)
- Surgical Guide
- Start Bite, Angle Rotation Guide and Prosthetic Bite Guide
- Tissue Gasket
- 2 Long-Term Provisionals
- Surgical Report

[Guided Prosthetics RX Order Form](#)



#### nSequence CT Surgical Guides

The nSequence CT Surgical Guides include the following:

- Collaborative Surgical Planning
- Surgical Guide
- Optional Temporary Restoration (additional costs will apply)
- Surgical Report

[Surgical Guide RX Order Form](#)

**STEP 13.** Finally, complete the RX order form and click **SUBMIT**.